

MONTHLY MEMBERSHIP PROGRESS REPORT

LOCATION CALIFORNIA

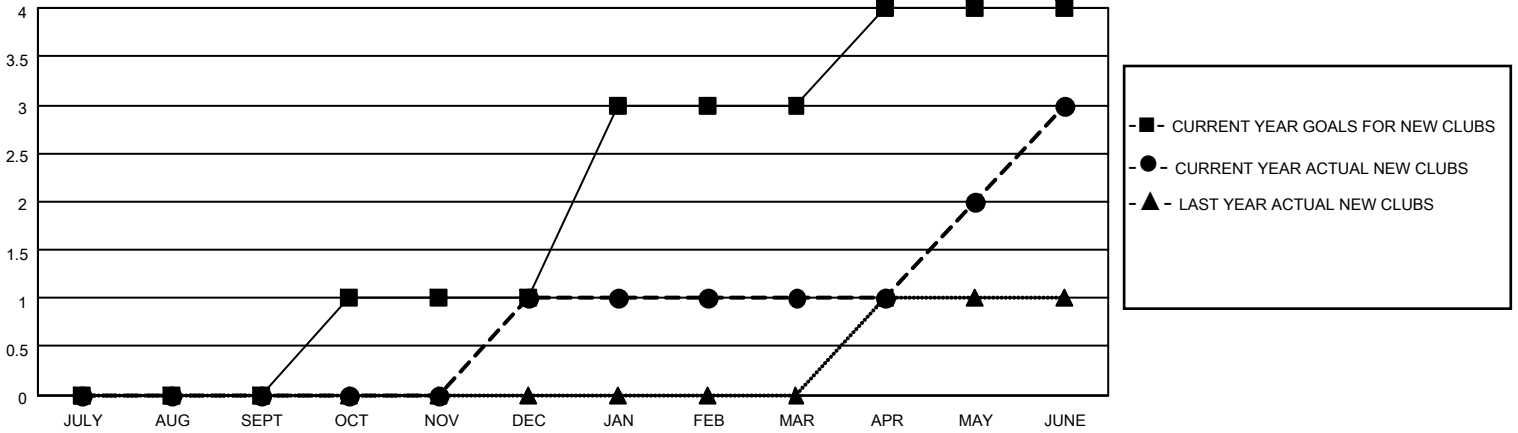
District 4 C3

Results as of: 6/30/2021

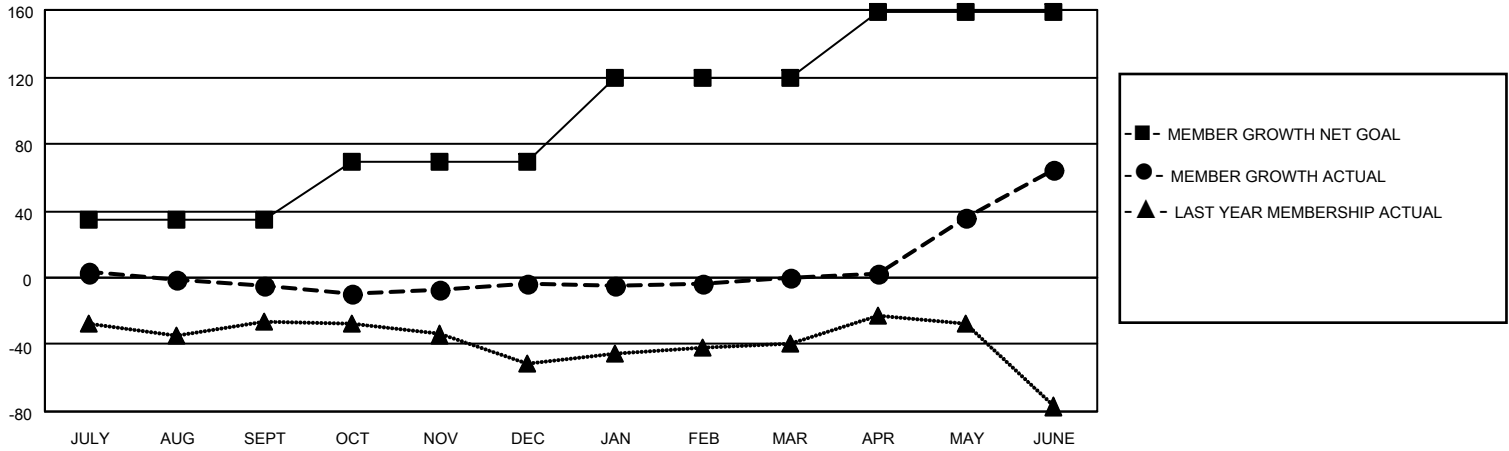
| Clubs | | | |
|-----------------------|---------------|-----------|---------------|
| RESULTS FOR 2020-2021 | | | |
| QUARTER | NEW CLUB GOAL | NEW CLUBS | DROPPED CLUBS |
| JULY/AUG/SEPT | 0 | 0 | 0 |
| OCT/NOV/DEC | 1 | 1 | 1 |
| JAN/FEB/MAR | 2 | 0 | 0 |
| APR/MAY/JUNE | 1 | 2 | 0 |

| Members | | | |
|-----------------------|------------------------|----------------------|--|
| RESULTS FOR 2020-2021 | | | |
| QUARTER | MEMBER GROWTH NET GOAL | MEMBER GROWTH ACTUAL | DROPPED MEMBERS ACTUAL (including transfers) |
| JULY/AUG/SEPT | 35 | 39 | 41 |
| OCT/NOV/DEC | 34 | 42 | 37 |
| JAN/FEB/MAR | 50 | 13 | 9 |
| APR/MAY/JUNE | 40 | 107 | 39 |

GOALS AND ACTUAL NEW CLUBS CUMULATIVE



GOALS AND ACTUAL MEMBERS CUMULATIVE



| | | |
|---------------------------------|---|--|
| DROPPED CLUBS: 1 | 28 CLUBS OF 44 ADDED 1 OR MORE NEW MEMBERS | <u>GENDER DISTRIBUTION</u> |
| <u>DROPPED MEMBERS</u> | CLICK HERE FOR CUMULATIVE MEMBERSHIP DATA | MALE 564 (52.13%) |
| DECEASED 18 | | FEMALE 518 (47.87%) |
| CLUB CANCELLED 15 | | TOTAL FAMILY UNIT MEMBERS 200 |
| OTHER 93 | | FAMILY MEMBERS PAYING HALF DUES 107 |
| TOTAL 126 | | |